

Demand forecast and network balancing

KEY TRANSMISSION FIGURES



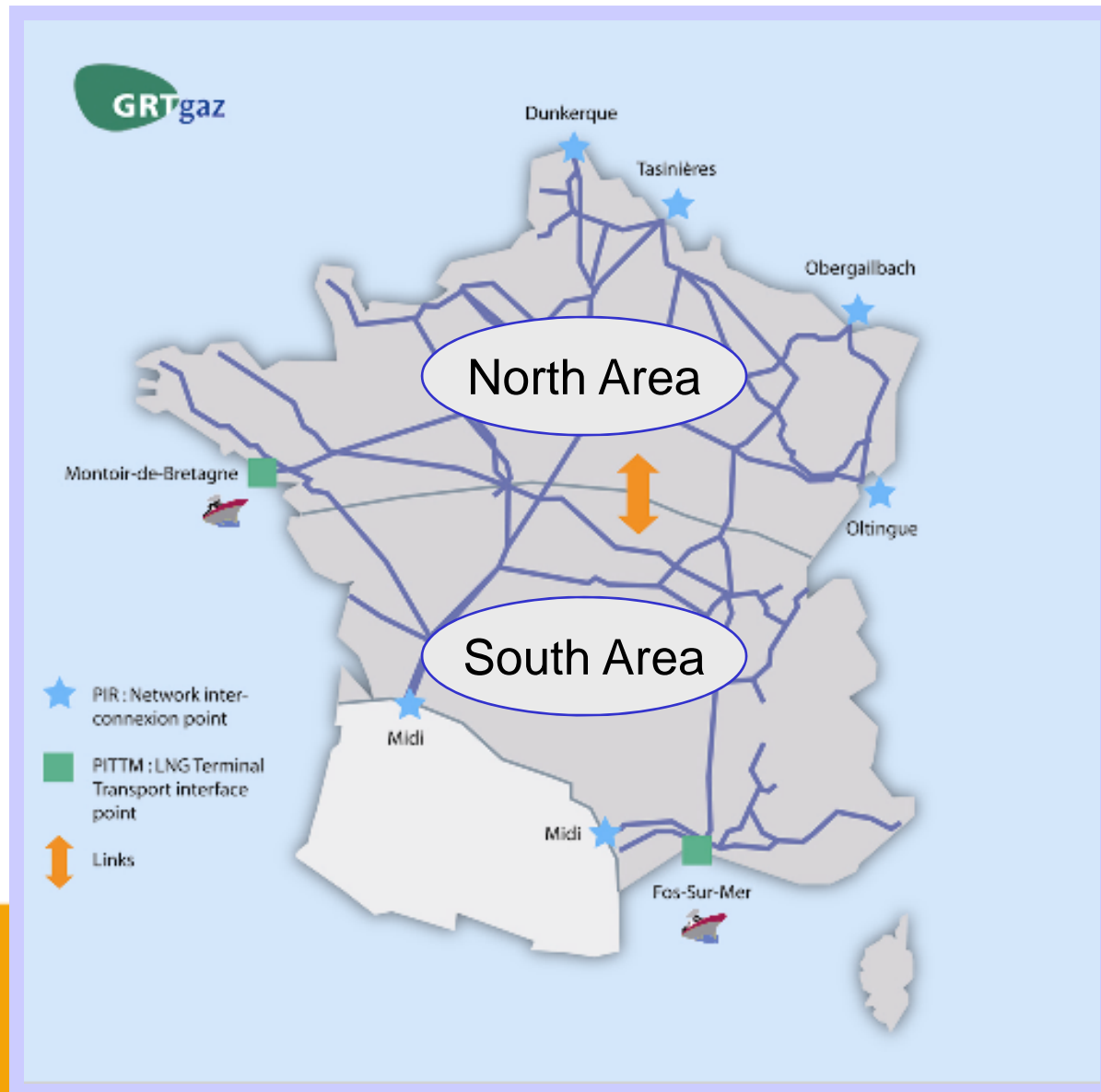
25050

2051kWh

26° C

ALL DATA OF NATURAL GAS
TRANSMISSION ACTIVITY

GRTgaz Network and areas (balancing zones)



Consumption Forecast Publication

KEY TRANSMISSION FIGURES



25050

2051kWh

26°C

ALL DATA OF NATURAL GAS TRANSMISSION ACTIVITY

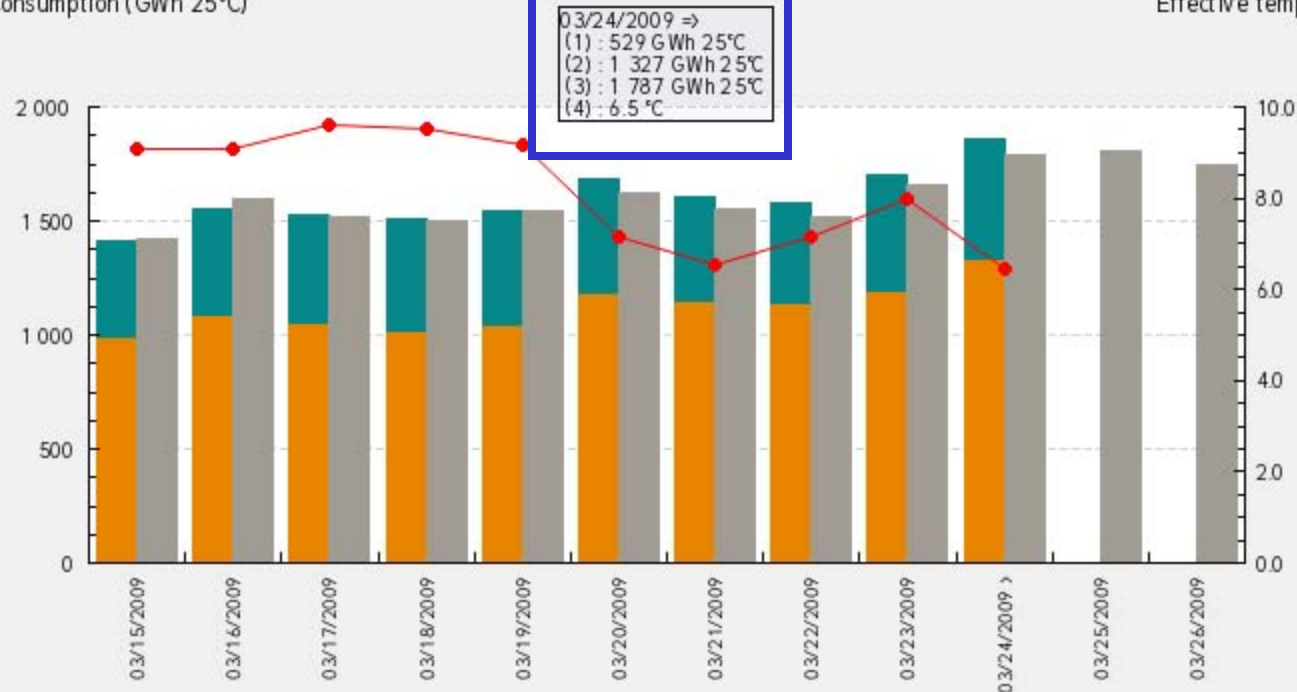
DAILY DATA - AREAS - CONSUMPTIONS - ALL AREAS
from march 15th 2009 to march 26th 2009

Show graphs details

Areas > Consumptions > All areas

Consumption (GWh 25°C)

Effective temperature (°C)



03/24/2009 =>
(1) : 529 GWh 25°C
(2) : 1 327 GWh 25°C
(3) : 1 787 GWh 25°C
(4) : 6.5 °C

- Measured consumption c.o.
- Industrial customers (1)
- Public distribution (2)
- Consumption forecast (3)
- Effective temperature (4)

Total value for the period:
> Measured consumptions : 15 983 GWh 25°C
> Consumption forecasts : 19 253 GWh 25°C

Consumption Forecast Publication

DAILY DATA - AREAS - CONSUMPTIONS - ALL AREAS
from march 15th 2009 to march 26th 2009

KEY TRANSMISSION FIGURES



25050

2051kWh

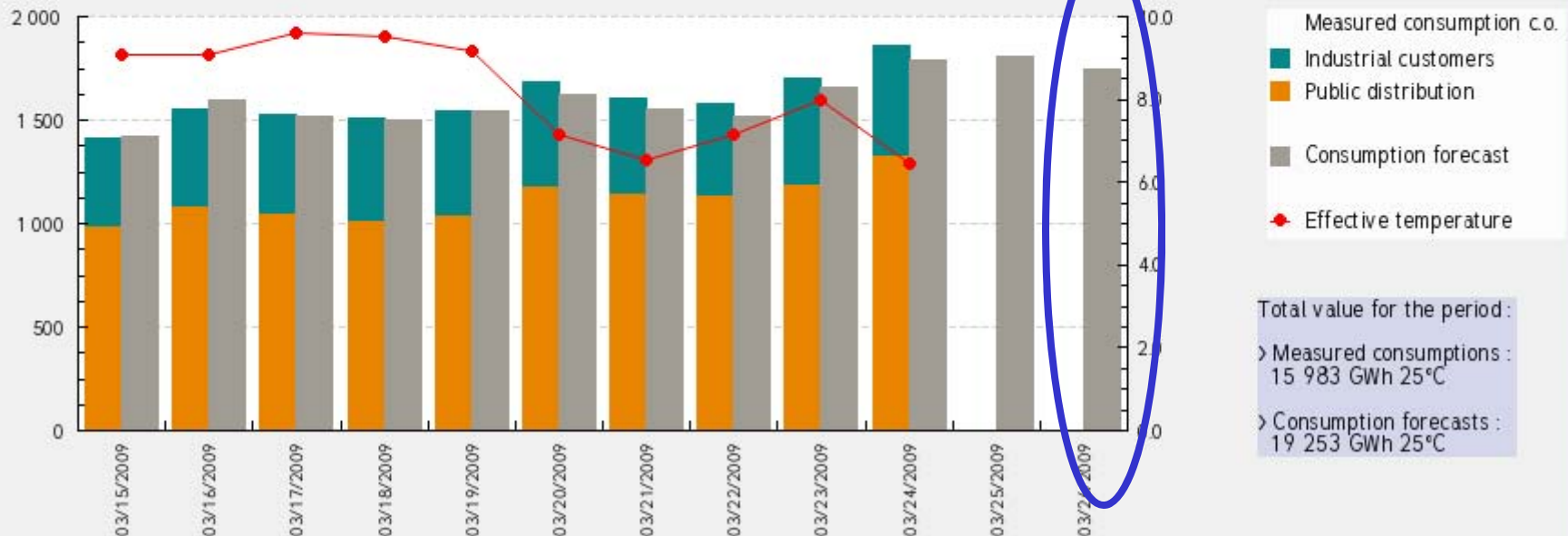
26°C

ALL DATA OF NATURAL GAS
TRANSMISSION ACTIVITY

Areas > Consumptions > All areas

Consumption (GWh 25°C)

Effective temperature (°C)

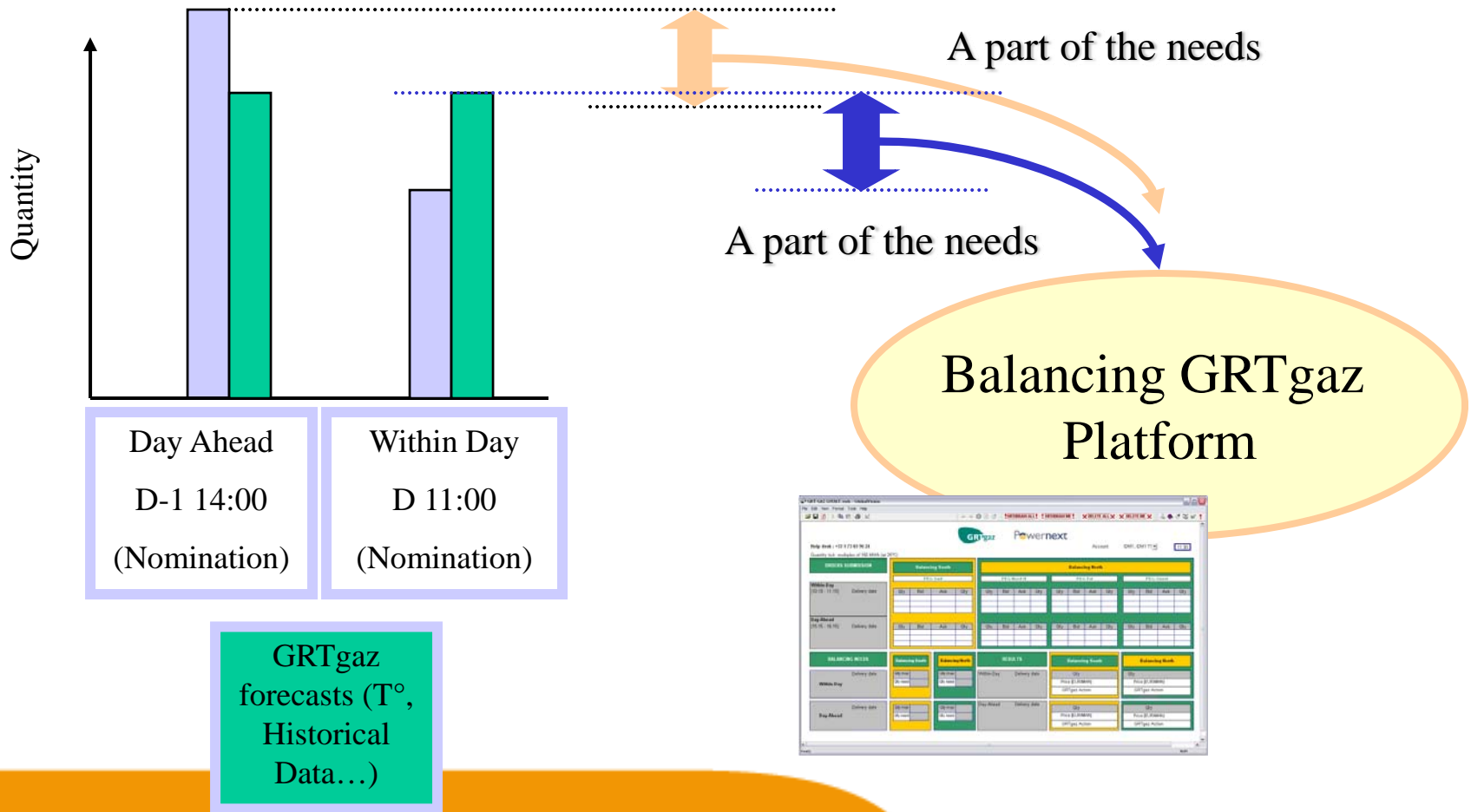


Total value for the period :

- > Measured consumptions : 15 983 GWh 25°C
- > Consumption forecasts : 19 253 GWh 25°C

Day Ahead GRTgaz Forecasts – 15:30

Consumption Forecasts : Shippers and GRTgaz



Daily physical balancing need

- Every day, GRTgaz performs transmission system scheduling for the next day and updates the schedule for the current day.
- This scheduling process allows, especially by comparing GRTgaz's consumption forecasts with shippers' nominations, to establish the day-to-day status of the transmission system for day D on the South zone and the North zone.
- In each of these balancing zones, if the system is forecast to be “long” (gas surplus), GRTgaz responds by selling on the balancing market. Conversely, if the system is forecast to be “short” (gas deficit), GRTgaz responds by buying on the balancing market.

Daily physical balancing need

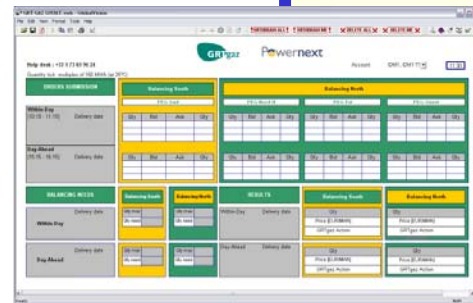
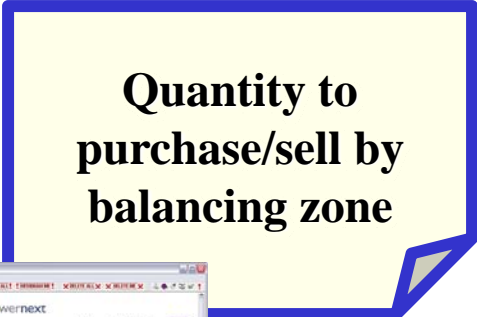
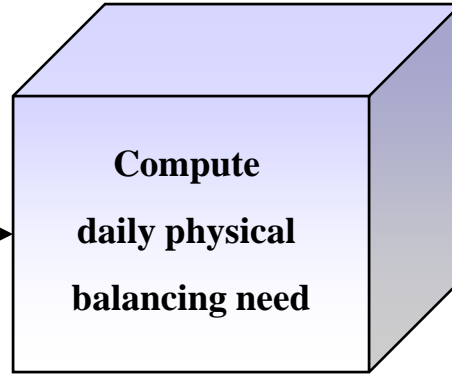
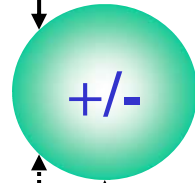
Shippers delivery
Forecasts

GRTgaz delivery
Forecasts

Adjustment parameters

Cumulated Imbalance
Account Nominations

Linepack variation



Daily physical balancing need

- The quantity of gas that GRTgaz can buy or sell is capped at a maximum intervention volume per balancing zone
- The balancing price generated by trading on the platform is used when billing shippers for the proportion of their own imbalances.

(Calculation made with DA and WD trade sessions when existing, or calculation rules for week ends)

Monthly information report on GRTgaz's balancing market activity

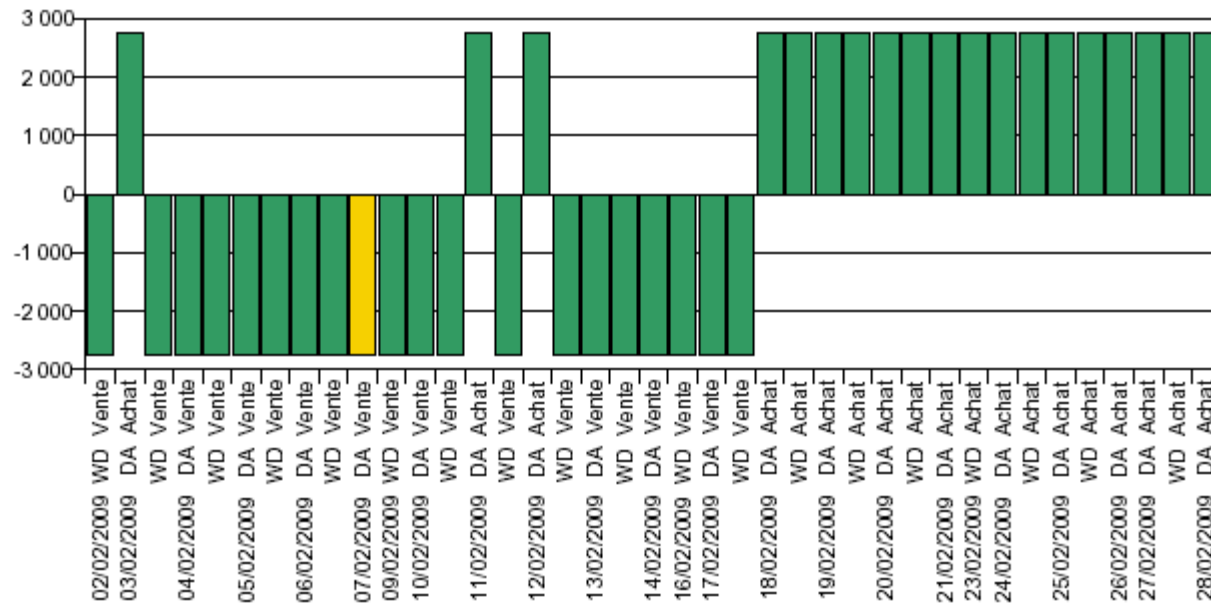
Volumes

GRTgaz action : Bid = Positive volume / Ask = Negative volume

in MWh

Yellow areas represent uncovered needs

Nord



KEY TRANSMISSION FIGURES



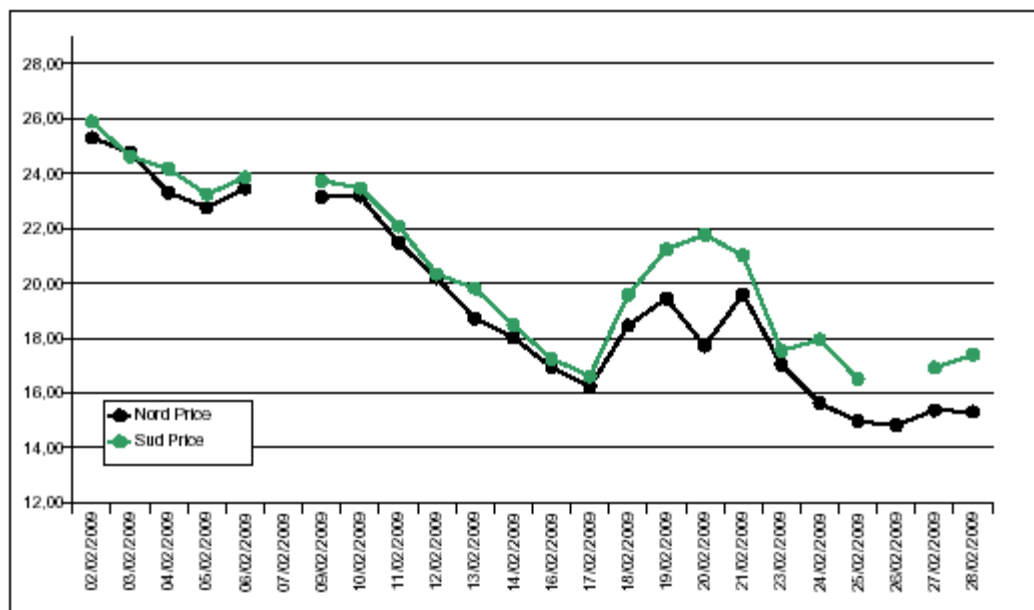
ALL DATA OF NATURAL GAS TRANSMISSION ACTIVITY

Monthly information report on GRTgaz's balancing market activity

Prices

Daily average prices

in E/MWh



Gas Day	Nord Price	Sud Price
02/02/2009	25,30	25,88
03/02/2009	24,76	24,61
04/02/2009	23,29	24,17
05/02/2009	22,75	23,23
06/02/2009	23,46	23,85
07/02/2009		
09/02/2009	23,15	23,73

GRTgaz

KEY TRANSMISSION FIGURES

25050
2051kWh
26° C

ALL DATA OF NATURAL GAS TRANSMISSION ACTIVITY

Shippers' Daily imbalance – Principal rules

- Provisional Daily imbalance quantities calculated every day
- Definitive Daily Imbalance quantities calculated M+1
- For each daily imbalance :
 - A part of the imbalance is tolerated
 - Beyond the tolerance, quantities are exposed to penalties, referring to the price from Balancing Platform